

LD10235

HIGH-POWER FLOOR OR CEILING MOUNTED SPOTLIGHT



R + R



The LD10235 is a powerful floor and ceiling mounted spotlight suitable for interior or exterior applications and designed around our powerful LD150 and LD151 uplights. It can be specified with a wide range of options allowing it to suit most project requirements. Available LED engines include E3, Tunable White, CLR, RGBW and F1 which offer a range of colour temperatures between 2200K-5000K and beam angles with multiple accessories to choose from. The deep recessed LED and matt black inner baffle allow for an ultra-low glare illumination. Equipped with a built-in anti-wicking barrier for added protection against water ingress, the LD10235 has a sleek body that is a machined billet of aluminium, available in multiple paint finishes. This is a very tough, high quality fitting, machined from high grade materials, ensuring excellent thermal and light output performance.

KEY FEATURES

- > E3 engine featuring the NICHIA LED, delivering up to 653 lumens in 3000K with 2-step binning and built-in reverse polarity protection
- > Available with F1, CLR, RGBW and Tunable White LED engines and optional 2nd channel LEDs for secondary lighting applications
- > Surface mounted version of the LD151 recessed uplight
- > Range of beam angles, featuring narrow 12° spot for lighting columns and arches, or a 15°x 49° spreader lens, which is ideal for wall washing applications
- > Single light source and optic produces a very consistent beam with no multiple shadows
- > LED and lens recessed in a matt black anodised body for reduced glare
- > Optional glare shield accessories available for reduced glare
- > Body is a machined solid billet of aluminium
- > Paint finishes include: White (RAL 9016), Silver, Anthracite Grey (RAL 7016), Black (RAL 9005), Antique Bronze, Satin Antique Brass, Satin Brass or any RAL finish
- > Available with Switched, 0-10V, Casambi, DMX, Dali or Mains dimmable drivers





DIMENSIONS

Dimensions in mm

For fitting dimensions please go to page 4.



WHITE LED ENGINE SPECIFICATION

| Engine | E3 | | | F1 | | |
|---------------------------------------|---|------------|-------------|-----------------------------------|------------|------------|
| Beam angles | 12°, 19°, 34°, 54°, 15°x 49° | | | 21°, 35°, 52°, 17° x 48° | | |
| LED manufacturer | NICHIA | | | CREE | | |
| Colour temperature | 2200K, 2700K, 3000K, 4000K, 5000K | | | 2200K, 2700K, 3000K, 4000K, 5000K | | |
| Current [Rated Output] | 350mA [5W] | 500mA [7W] | 700mA [10W] | 350mA [3.5W] | 500mA [5W] | 700mA [7W] |
| Typical LED Circuit wattage | 4.4W | 6.4W | 9.2W | 3.3W | 5W | 7.2W |
| Delivered lumens (L ₁₀₀)* | 379 | 493 | 653 | 227 | 241 | 367 |
| Delivered lm/Circuit W** | 85 | 77 | 71 | 68 | 48 | 51 |
| Typical LED Source wattage | 4W | 5.8W | 8.3W | 3W | 4.5W | 6.5W |
| Source LED lm | 574 | 740 | 949 | 377 | 497 | 654 |
| Source lm/W | 144 | 128 | 114 | 126 | 110 | 101 |
| Forward voltage (V ₁₀₀) | 11.3V | 11.6V | 11.8V | 8.7V | 9V | 9.3V |
| CRI | 85 | | | 90 | | |
| Colour consistency | 2 SDCM | | | 3 SDCM | | |
| Peak intensity | 6,104 cd | | | 1,641 cd | | |
| LOR | 0.69 | | | 0.56 | | |
| TM30 | RF85 RG99 | | | RF90 RG103 | | |
| UGR rating ('downlight' mounted) *** | 4.5 | 5.4 | 6.4 | 6.5 | 6.7 | 8.1 |
| BUG rating ('downlight' mounted) | B1-U1-G0 | | | B1-U1-G0 | | |
| BUG rating ('uplight' mounted) | B0-U4-G0 | | | B0-U4-G0 | | |
| LED lifetime | L90B5 at 90,000hrs | | | | | |
| Applications |     | | | | | |

These values are based around a LD10235-E3-700-LW30-NB & LD10235-F1-700-LW22-MSB

*Lumen output data applies to all colour temperatures

**LED wattage includes losses associated with using a 90% efficient driver

***UGR values based on room parameters of 4H 8H, C70 W50 F20



MECHANICAL

| | | 350mA | 500mA | 700mA |
|-------------------------------|---|---------------|---------------|---------------|
| Ambient temperature ○ 55°C | ⊕ E3 | -20°C to 55°C | -20°C to 55°C | -20°C to 50°C |
| | ⊙ F1 | -20°C to 55°C | -20°C to 55°C | -20°C to 50°C |
| Glass | Low iron glass 3mm thick | | | |
| Materials | Anodised aluminium body, with black anodised bezel | | | |
| Weight of product | 0.55kg | | | |
| IP rating | IP67 | | | |
| IK rating | IK08 | | | |
| Wiring | In-series constant current wiring (pre-wired with 2 core cable at a length of 1m) | | | |

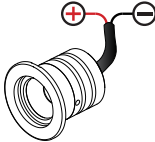
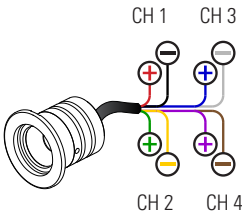
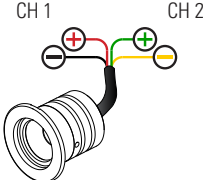
ENVIRONMENTAL

| | | | |
|--------------------|--|--|--|
| TM65 | Available on request | | |
| TM66 | 2.5 | | |
| Repair + Refurbish |  <p>This product is included in our Repair and Refurbish scheme. This offers customers the ability to send back products to us for repair or refurbishment to extend their life without having to buy new fittings.</p> | | |

COLOUR & DYNAMIC LED ENGINE SPECIFICATION

| Engine |  CLR - Colour |  RGBW |  TW - Tunable White |
|--------------------|--|--|--|
| Beam Angles | 24°, 38°, 54°, 20° x 46° | 38° colour mix lens | 24°, 38°, 54°, 20° x 46° |
| LED manufacturer | CREE | CREE | CREE |
| Colour temperature | Red, Green, Blue, Amber | Red, Green, Blue, 4000K White | Warm White 2700K or 3000K Cool White 4000K or 5000K |
| Current | 500mA | 350mA 500mA | 350mA 500mA |
| LED power (Max) | 7W | 5W 7W | 6.3W (7W) 3.5W per channel |
| Applications |  | | |

MECHANICAL

| | | | |
|-------------------|---|---|--|
| Glass | Low iron glass 3mm thick | | |
| Materials | Anodised aluminium body, with black anodised bezel | | |
| Weight of product | 0.55kg | | |
| IP rating | IP67 | | |
| IK rating | IK08 | | |
| Wiring | CLR - 2 core cables at 1m in length  | RGBW - 8 core cables at 1m in length  | TW - 4 core cables at 1m in length  |

AVAILABLE FINISHES

Please refer to our finishes guide for full details

The LD10235 body is a machined single billet of aluminium and is painted in-house at LightGraphix. Paint finishes are suitable for interior and exterior use on surface mounted products. Our standard colours are below but we can accommodate any RAL request.



SILVER
ANODISED



ANTIQUE
BRONZE



SATIN
ANTIQUE BRASS



SATIN
BRASS



BLACK
(RAL 9005)



ANTHRACITE
GREY(RAL 7016)



WHITE
(RAL 9016)

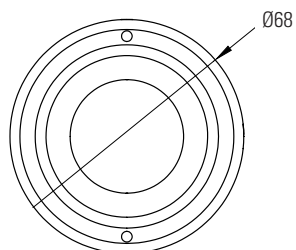


RAL COLOURS

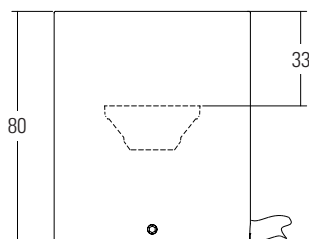
DIMENSIONS

Dimensions in mm

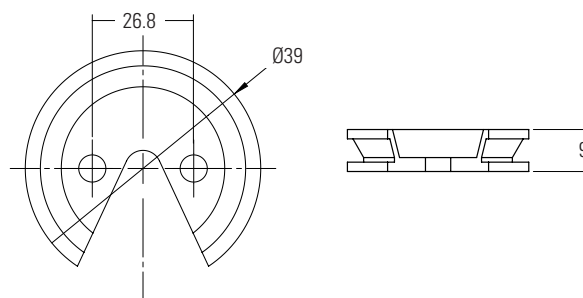
Top view



Side view



Mounting plate



GLARE SHIELD OPTIONS

LD10235 comes with a choice of glare control options to further reduce glare from the powerful LED and optic. This does not reduce the light on the lit surface (wall) but it will cut out some light onto the ceiling or floor. Please refer to our photometric files for lumen data that is available to download from our website.



/NGS No glare shield

No glare shield. Deep recessed optic and matt black anodised optic holder aids in glare reduction.



/GS Glare shield

Standard glare shield provides an excellent balance between glare control and light output. This accessory works well in most applications.

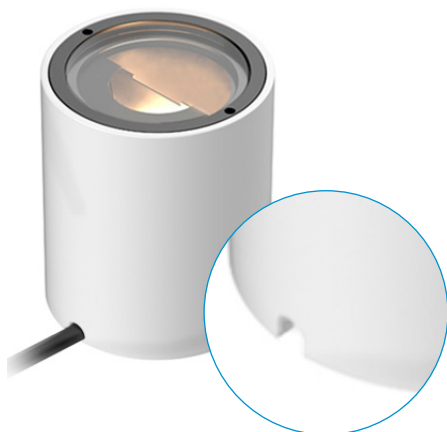


/GSHM Half moon glare shield

Half-moon glare shield for applications that require very low glare. Minimal loss of light on lit surface (wall) but overall lumen output typically reduced by 50-60%.

CABLE EXIT

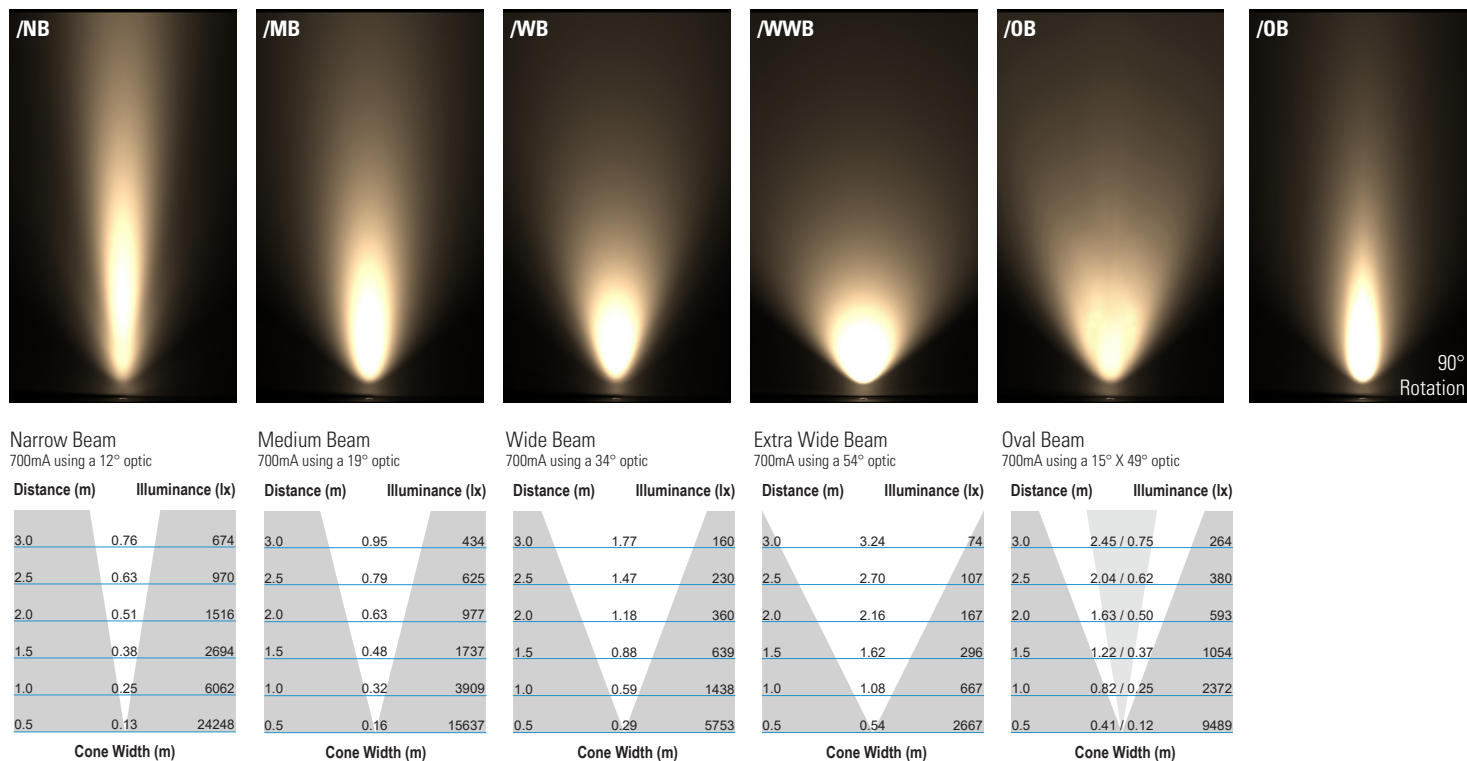
The LD10235 features a sleek body with an integrated groove designed specifically for a flush cable exit when mounted. This design ensures a clean and seamless installation, allowing cables to be neatly concealed.



CONE DIAGRAMS

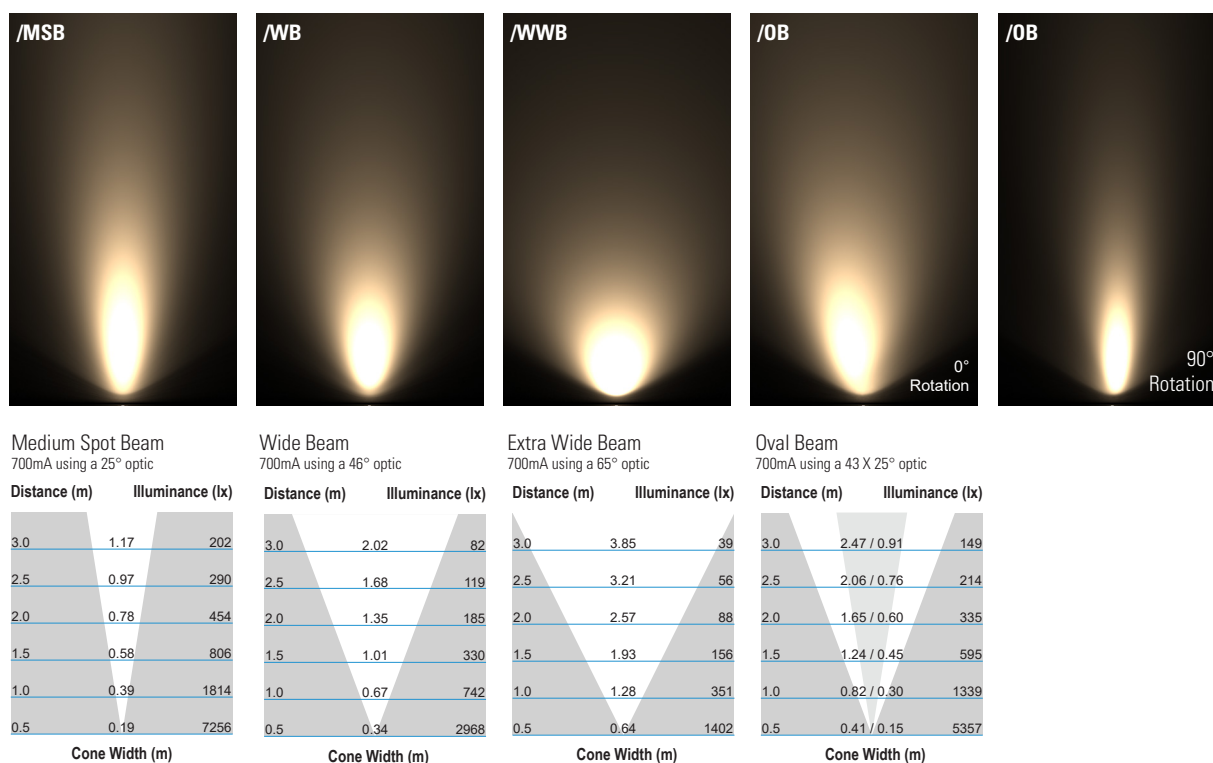
E3 LED Engine

Cone diagrams below are based on a 3000K E3 LED engine run at maximum output 700mA, 10W. Images below represents beam outputs when wall washing a 3m wall, spaced 125mm away from the lit surface. Photometric files (LDT) are included in the design pack which can be downloaded from the LD10235 product page on the website.



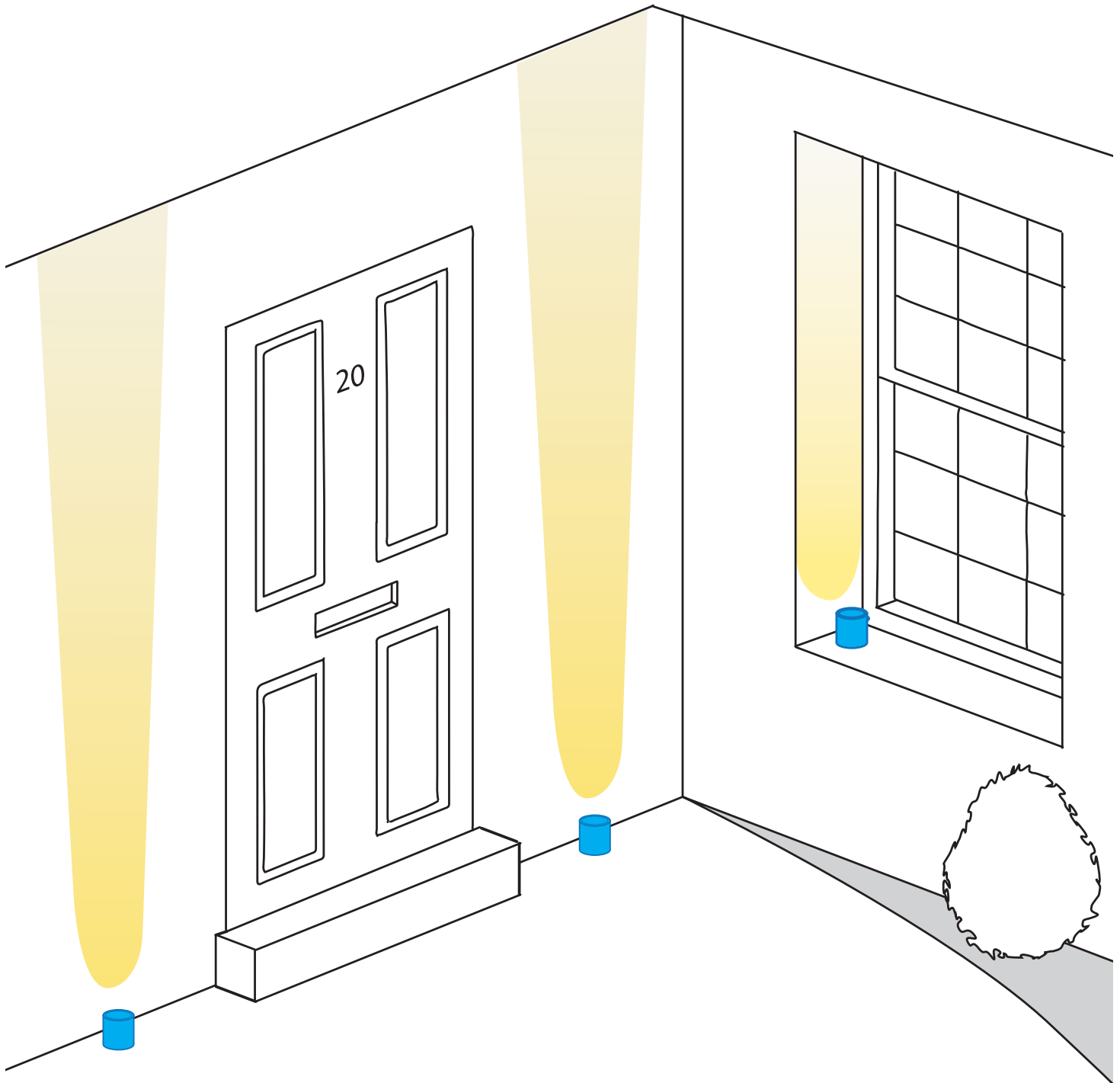
F1 LED Engine

Cone diagrams below are based on a 3000K F1 LED engine run at maximum output 700mA, 10W. Images below represents beam outputs when wall washing a 3m wall, spaced 125mm away from the lit surface. Photometric files (LDT) are included in the design pack which can be downloaded from the LD10235 product page on the website.



INSTALLATION GUIDE

LD10235 is incredibly versatile, allowing it to be used in a variety of applications from lighting window reveals to wall and floor washing.



ORDER CODES & OPTIONS

Example: LD10235-E3-350/LW30/NB/NGS/White

| Light engine & drive current | LED colour | Beam angle | Glare shields | Finish |
|------------------------------|------------|------------|---------------|--------|
| LD10235 - | / | / | / | / |

Ambient temperature key: 55°C

WHITE LED ENGINES

E3

| | |
|----------------------------|----------------|
| 55°C 5W LED at 350mA | LD10235-E3-350 |
| 55°C 7W LED at 500mA | LD10235-E3-500 |
| 10W LED at 700mA | LD10235-E3-700 |

| | |
|-----------------------------|-------|
| Super Warm White (2200K) | /LW22 |
| Extra Warm White (2700K) | /LW27 |
| Warm White (3000K) | /LW30 |
| White (4000K) on request | /LW40 |
| Cool White (5000K) | /LW50 |

| | |
|-----------------|------|
| 12° Narrow spot | /NB |
| 18° Medium | /MB |
| 31° Wide | /WB |
| 55° Extra wide | /WWB |
| 14° x 48° Oval | /OB |



/NGS



/GS



/GSHM



Paint Finish
Silver Anodised



Paint Finish
Antique Bronze



Paint Finish
Satin Antique Brass



Paint Finish
Satin Brass



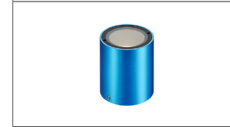
Paint Finish
Black
(RAL 9005)



Paint Finish
Anthracite Grey
(RAL 7016)



Paint Finish
White
(RAL 9016)



Paint Finish
RAL

F1

| | |
|------------------------------|----------------|
| 55°C 3.5W LED at 350mA | LD10235-F1-350 |
| 55°C 5W LED at 500mA | LD10235-F1-500 |
| 7W LED at 700mA | LD10235-F1-700 |

| | |
|-----------------------------|-------|
| Super Warm White (2200K) | /LW22 |
| Extra Warm White (2700K) | /LW27 |
| Warm White (3000K) | /LW30 |
| White (4000K) on request | /LW40 |
| Cool White (5000K) | /LW50 |

| | |
|-----------------|------|
| 21° Medium spot | /MSB |
| 35° Wide | /WB |
| 52° Extra wide | /WWB |
| 17° x 48° Oval | /OB |

Drivers

Use with 350mA, 500mA & 700mA constant current LED drivers










We have a range of dimmable LED drivers DMX and DALI compatible. Please see the downloads section on our website.

ORDER CODES & OPTIONS

Example: LD10235-RGBW-350/38° Colour mix lens/NGS/White

| Light engine & drive current | LED colour | Beam angle | Glare shields | Finish |
|------------------------------|------------|------------|---------------|--------|
| LD10235 - | / | / | / | / |

COLOUR & DYNAMIC LED ENGINES

| | | | | | | | | | | | | |
|---|------------------|---|-----------------|---------------------|------|---|-------|---|---|--|--|--|
| <div></div> <div>CLR</div> | | | | | | | | | | | | |
| 7W LED at 500mA | LD10235-CLR-500 | Red | /LR | 24° Medium | /MB |  | /NGS |  | Paint Finish Silver Anodised | | | |
| | | Green | /LG | 38° Wide | /WB | | | | | | | |
| | | Blue | /LB | 54° Extra wide | /WWB | | | | | | | |
| | | Amber | /LA | 20° x 46° Oval | /OB | | | | | | | |
| <div></div> <div>RGBW</div> | | | | | | | | | | | | |
| 5W LED at 350mA | LD10235-RGBW-350 | | | 38° Colour mix lens | |  | /GS |  | Paint Finish Antique Bronze | | | |
| 7W LED at 500mA | LD10235-RGBW-500 | | | | | | | | Paint Finish Satin Antique Brass | | | |
| | | | | | | | | | Paint Finish Satin Brass | | | |
| <div></div> <div>TW</div> | | | | | | | | | | | | |
| 3.5W LED at 350mA | LD10235-TW-350 | Tunable White 2700K & 4000K (standard option) | /LW27 + LW40 | 24° Medium | /MB |  | /GSHM |  | Paint Finish Satin Brass | | | |
| | | Tunable White 2700K & 5000K | /LW27 + LW50 | 38° Wide | /WB | | | | Paint Finish Satin Black (RAL 9005) | | | |
| | | Custom | /LW** + L** | 54° Extra wide | /WWB | | | | Paint Finish Anthracite Grey (RAL 7016) | | | |
| | | | | 20° x 46° Oval | /OB | | | | Paint Finish White (RAL 9016) | | | |
| Drivers | | | | | | | | | | | | |
| Use with 350mA, 500mA & 700mA constant current LED drivers We have a range of dimmable LED drivers DMX and DALI compatible. Please see the downloads section on our website. | | | | | | | | | | | | |